

The ultimate option if you don't like the idea of running cables to temperature sensors, the Dataterm Wireless Option really is simple to set-up & use plus it reduces the overall installation time thus saving money even before it is switched on! Comes complete with wireless sensor and Dataterm RF receiver, additional sensors available for up to 4 heating zones.

Dataterm Wireless Receiver



Dataterm now has the ability to use wireless sensors to sense the temperature in up to 4 different heating zones!

The Wireless Option Kit comes complete with 1 wireless sensor so current Dataterm users can upgrade their existing Dataterm to become wireless.

If you do not yet own a Dataterm you can opt for the wireless version when placing your order for one of the various models available.

We will add the wireless option to the selected model leaving you to select the number of wireless sensors you require.

You can mix and match wired sensors with wireless sensors making installation easy.

For Standard and Combi versions of Dataterm just add the Wireless Option Kit, for Multizone products just add the kit plus the number of wireless sensors, remember 1 is already included in the kit...

See warmworld.co.uk for more information or to order your energy saving products...

www.warmworld.co.uk

Wireless Sensor



Technical Data

Frequency	868 Mhz FM
Range	100M Clear Sight
Dimensions	H x W x D 85 x 160 x 29mm
Dataterm PSU	12Vdc from Wiring Centre
Colour	Cream / White & Chrome
Installation Height	1.68m from the floor finish

Product Reference

Description	Code
Wireless Sensor	RSW
Battery	Duracell AA
Wireless Kit c/w HW	D4IHC RF
Wireless Kit Combi Boiler	D4IHC RF/C

Dataterm will accept up to 4 wireless sensors per Dataterm head unit allowing total control of up to 4 heating zones and hot water.

* Estimated battery life from tests carried out in average conditions - also dependant on location.

Dataterm is now even easier to install and use than ever before.

Using the latest radio technology it is possible to communicate with the Dataterm over large distances to allow temperature sensing any where in the home or workplace all without unsightly wires.

This can reduce installation times immensely and reduce labour charges to boot.

The sensors, one for each heating zone have dedicated transceivers that regularly send data to the programmer so that the temperature is updated to aid temperature control and confort.

Using the latest technology and advances in software and hardware design Warmworld have achieved excellent battery life and range with this wireless option.

For transmission problem areas the remote sensors can be wired for secure communication between the sensor and the programmer.



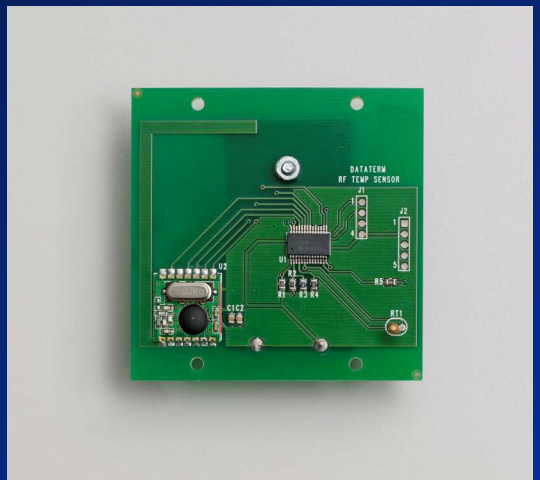
Technical Data

Frequency	868 Mhz FM
Range	100M Clear Sight
Power Supply	2 x AA 1.5V Cells
Dimensions	H x W x D 80 x 80 x 29mm
Colour	Cream / Off White
Installation Height	1.68m from the floor finish
Battery Life	2 Years*

Product Reference

Description	Code
Wireless Sensor	RSW
Battery	Duracell AA
Programmer	D4IHC RF
Combi Version	D4IHC RF/C

Dataterm will accept up to 4 wireless sensors per Dataterm head unit allowing total control of up to 4 heating zones and hot water.



* Estimated battery life from tests carried out in